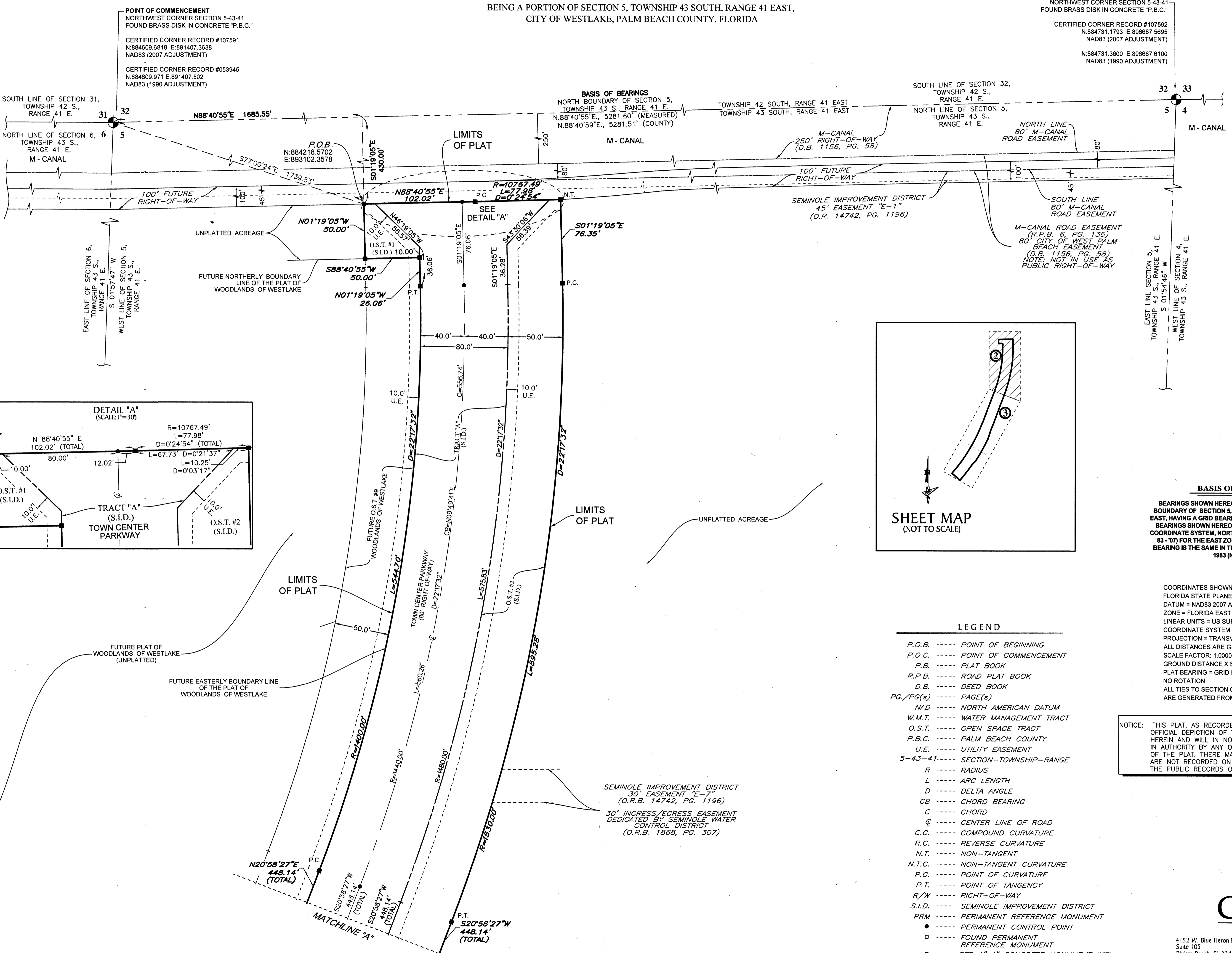


TOWN CENTER PARKWAY - PHASE IV

BEING A PORTION OF SECTION 5, TOWNSHIP 43 SOUTH, RANGE 41 EAST,
CITY OF WESTLAKE, PALM BEACH COUNTY, FLORIDA

1977



NORTHWEST CORNER SECTION 5-43-41
FOUND BRASS DISK IN CONCRETE "P.B.C."

CERTIFIED CORNER RECORD #107592
N:884731.1793 E:896687.5695
NAD83 (2007 ADJUSTMENT)

N:884731.3600 E:896687.6100
NAD83 (1990 ADJUSTMENT)

POINT OF COMMENCEMENT
NORTHWEST CORNER SECTION 5-43-41
FOUND BRASS DISK IN CONCRETE "P.B.C."

CERTIFIED CORNER RECORD #107591
N:884609.6818 E:891407.3638
NAD83 (2007 ADJUSTMENT)

CERTIFIED CORNER RECORD #053945
N:884609.971 E:891407.502
NAD83 (1990 ADJUSTMENT)

BASIS OF BEARINGS
NORTH BOUNDARY OF SECTION 5,
TOWNSHIP 43 S., RANGE 41 E.
N.88°40'55"E., 5281.60' (MEASURED)
N.88°40'59"E., 5281.51' (COUNTY)

SOUTH LINE OF SECTION 32,
TOWNSHIP 42 S.,
RANGE 41 E.

TOWNSHIP 42 SOUTH, RANGE 41 EAST

TOWNSHIP 43 SOUTH, RANGE 41 EAST

NORTH LINE OF SECTION 5,
TOWNSHIP 43 S.,
RANGE 41 E.

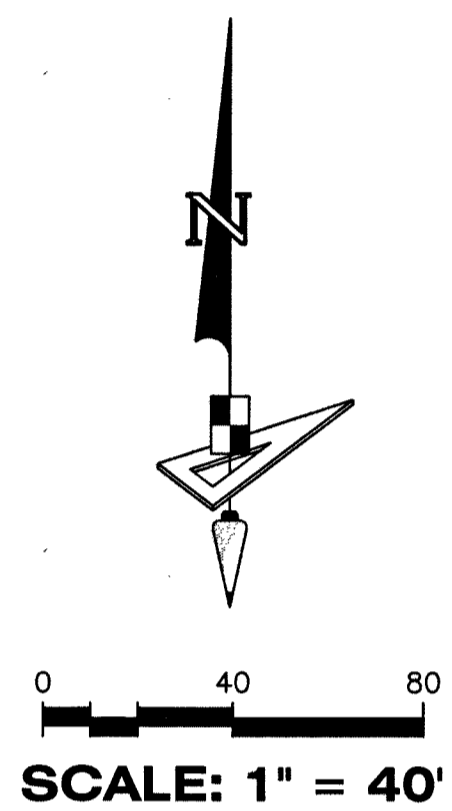
SOUTH LINE OF SECTION 31,
TOWNSHIP 42 S.,
RANGE 41 E.

NORTH LINE OF SECTION 6,
TOWNSHIP 43 S.,
RANGE 41 E.

M - CANAL

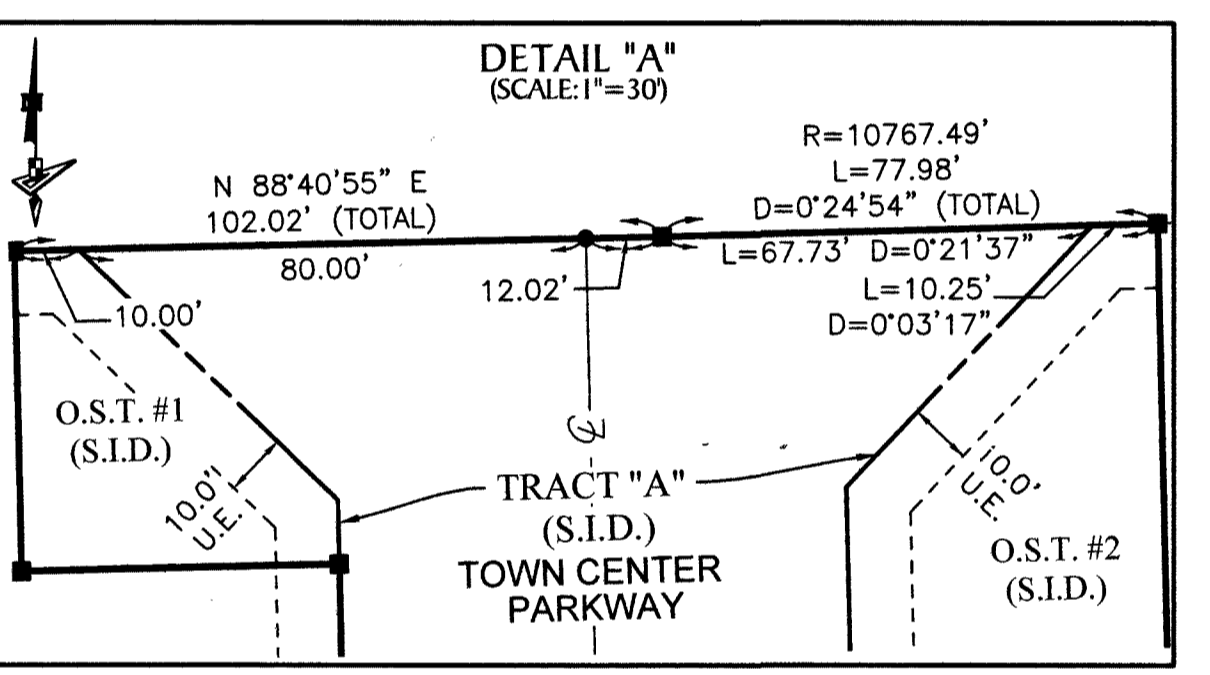
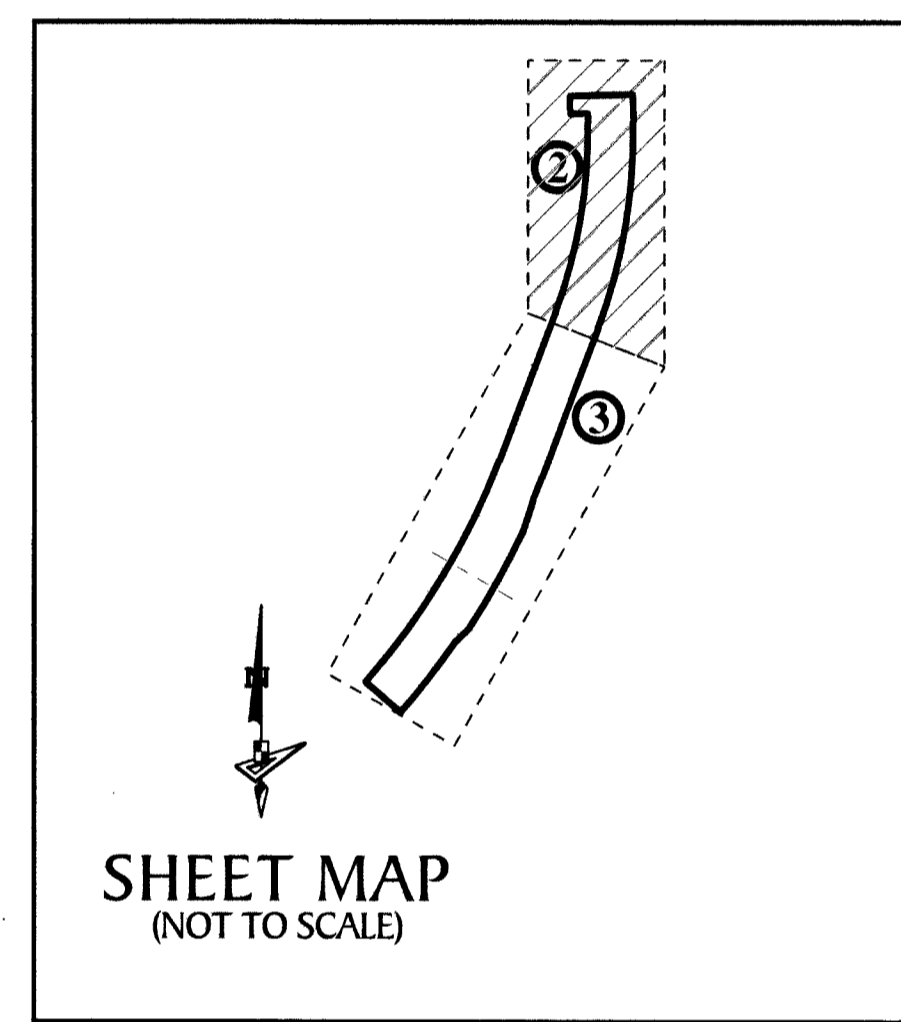
EAST LINE SECTION 5,
TOWNSHIP 43 S., RANGE 41 E.
S 01°54'46" W

WEST LINE OF SECTION 4,
TOWNSHIP 43 S., RANGE 41 E.



BASIS OF BEARINGS

BEARINGS SHOWN HEREON ARE BASED ON THE NORTH BOUNDARY OF SECTION 5, TOWNSHIP 43 SOUTH, RANGE 41 EAST, HAVING A GRID BEARING OF N.88°40'55"E. (MEASURED). BEARINGS SHOWN HEREON, REFER TO THE STATE PLANE COORDINATE SYSTEM, NORTH AMERICA DATUM OF 1983 (NAD 83 - '07) FOR THE EAST ZONE OF FLORIDA. SAID BASIS OF BEARING IS THE SAME IN THE NORTH AMERICAN DATUM OF 1983 (NAD 83 - '90).



- LEGEND**
- P.O.B. ----- POINT OF BEGINNING
 - P.O.C. ----- POINT OF COMMENCEMENT
 - P.B. ----- PLAT BOOK
 - R.P.B. ----- ROAD PLAT BOOK
 - D.B. ----- DEED BOOK
 - PG./PG(S) ----- PAGE(S)
 - NAD ----- NORTH AMERICAN DATUM
 - W.M.T. ----- WATER MANAGEMENT TRACT
 - O.S.T. ----- OPEN SPACE TRACT
 - P.B.C. ----- PALM BEACH COUNTY
 - U.E. ----- UTILITY EASEMENT
 - 5-43-41 ----- SECTION-TOWNSHIP-RANGE
 - R ----- RADIUS
 - L ----- ARC LENGTH
 - D ----- DELTA ANGLE
 - CB ----- CHORD BEARING
 - C ----- CHORD
 - CL ----- CENTER LINE OF ROAD
 - C.C. ----- COMPOUND CURVATURE
 - R.C. ----- REVERSE CURVATURE
 - N.T. ----- NON-TANGENT
 - N.T.C. ----- NON-TANGENT CURVATURE
 - P.C. ----- POINT OF CURVATURE
 - P.T. ----- POINT OF TANGENCY
 - R/W ----- RIGHT-OF-WAY
 - S.I.D. ----- SEMINOLE IMPROVEMENT DISTRICT
 - PRM ----- PERMANENT REFERENCE MONUMENT
 - ----- PERMANENT CONTROL POINT
 - ----- FOUND PERMANENT REFERENCE MONUMENT
 - ----- SET 4"x4" CONCRETE MONUMENT WITH 2" ALUMINUM DISK STAMPED "PRM LB 7768"

COORDINATES SHOWN HEREON ARE
FLORIDA STATE PLANE GRID
DATUM = NAD83 2007 ADJUSTMENT
ZONE = FLORIDA EAST
LINEAR UNITS = US SURVEY FEET
COORDINATE SYSTEM = 1983 STATE PLANE
PROJECTION = TRANSVERSE MERCATOR
ALL DISTANCES ARE GROUND
SCALE FACTOR: 1.0000
GROUND DISTANCE X SCALE FACTOR = GRID DISTANCE
PLAT BEARING = GRID BEARING
NO ROTATION
ALL TIES TO SECTION CORNERS AND QUARTER CORNERS
ARE GENERATED FROM MEASURED VALUES

NOTICE: THIS PLAT, AS RECORDED IN ITS GRAPHIC FORM, IS THE OFFICIAL DEPICTION OF THE SUBDIVIDED LANDS DESCRIBED HEREIN AND WILL IN NO CIRCUMSTANCES BE SUPPLANTED IN AUTHORITY BY ANY OTHER GRAPHIC OR DIGITAL FORM OF THE PLAT. THERE MAY BE ADDITIONAL RESTRICTIONS THAT ARE NOT RECORDED ON THIS PLAT THAT MAY BE FOUND IN THE PUBLIC RECORDS OF THIS COUNTY.

SEMINOLE IMPROVEMENT DISTRICT
30' EASEMENT "E-7"
(O.R.B. 14742, PG. 1196)

30' INGRESS/EGRESS EASEMENT
DEDICATED BY SEMINOLE WATER
CONTROL DISTRICT
(O.R.B. 1868, PG. 307)

GeoPoint
Surveying, Inc.

4152 W. Blue Heron Blvd.
Suite 105
Riviera Beach, FL 33404

Phone: (561) 444-2720
www.geopointsurvey.com
Licensed Business Number 18 7768

Sheet No. 2 of 3 Sheets